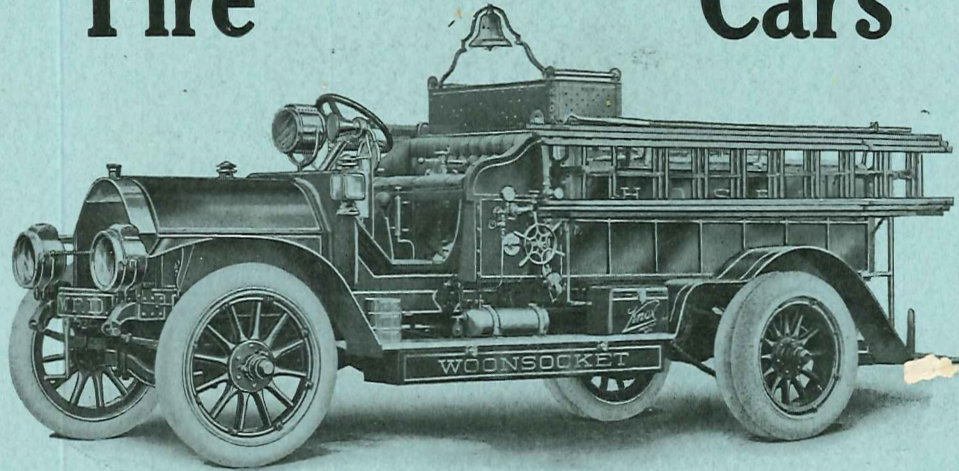
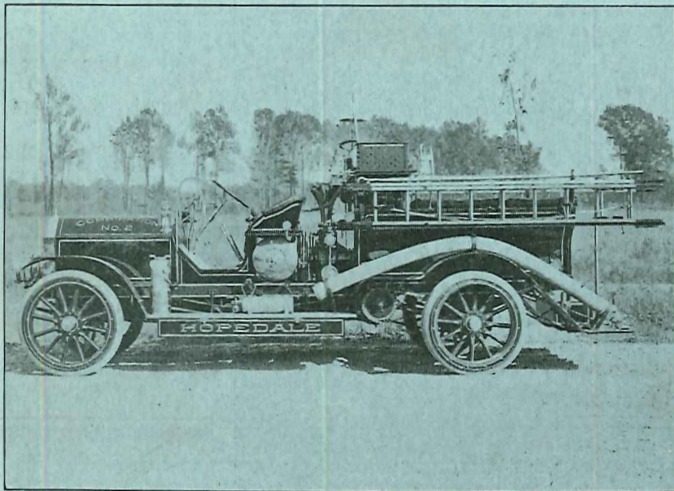




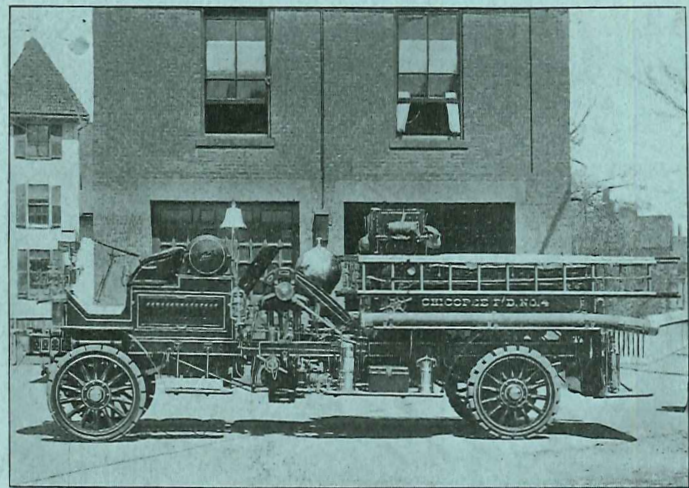
# Fire Cars



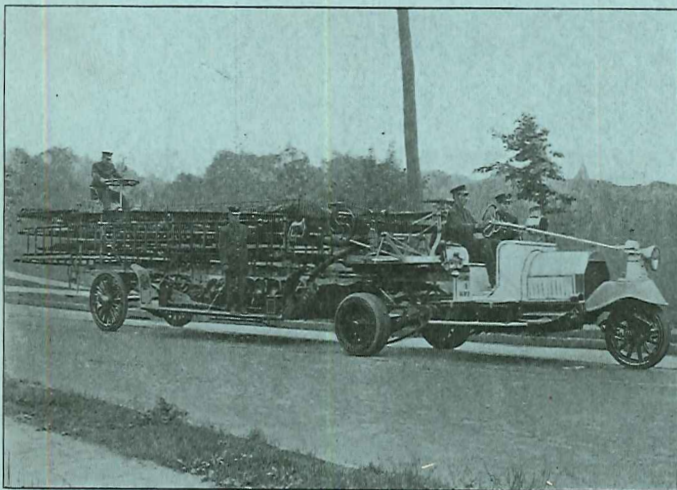
KNOX COMBINATION HOSE AND CHEMICAL CAR. MODEL M-3.



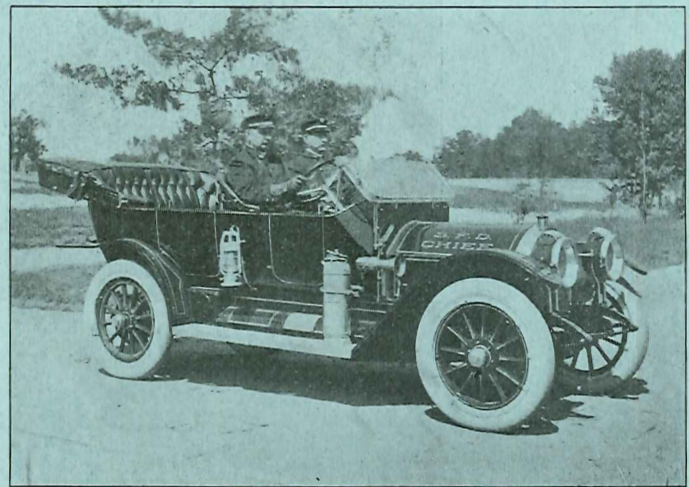
Knox Rotary Pumping Engine. Model 12.



Knox Piston-Type Pumping Engine. Model 8.



Knox-Martin Tractor. Model 81.



Knox Type of Chief's Car. Model R.

## Knox Automobile Co., Springfield, Mass.

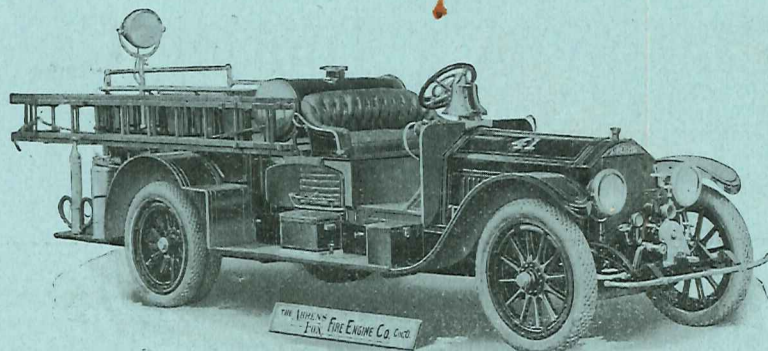
*Builders of all types of Motor Driven Fire Cars. Send for catalogs.*

Branches:  
NEW YORK  
BOSTON and  
CHICAGO



# Something Different

Light  
and  
Speedy



Quick  
and  
Effective

## Model "D"—A New Combination called the "Continental Scout"

Most Complete Skirmish Unit Ever Introduced

HOSE CARRIER

EXTINGUISHER

BOOSTER PUMP

The Cincinnati Fire Department is the pioneer user of this novel Ahrens-Fox Combination. Ten machines are in service, and Chief Bunker, endorsing the principle, says:

"I am particularly well pleased with the easy manner in which the small hose may be uncoiled from the vertical reel under the seat without kinks and tangles, and coupling this with the means provided for maintaining the small streams indefinitely and under perfect control, etc., makes the whole a combination which is at once new and very much more effective than we at first believed to be possible."

*Write for new Booklet and Specifications*

**THE AHRENS  
—FOX FIRE ENGINE CO. CINCINNATI, OHIO**

Motor Propelled and Horse-Drawn Steam and Gasoline-Driven

FIRE ENGINES

TRACTORS

CHEMICAL APPARATUS