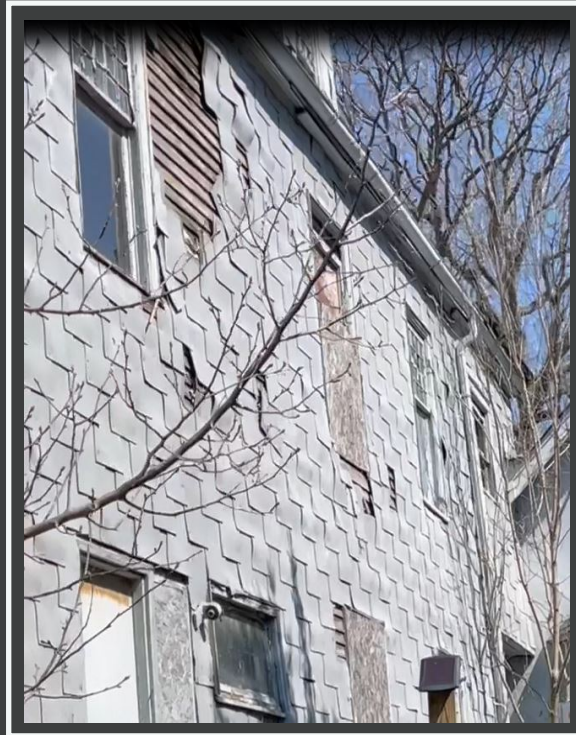


Main Street Memo:

The "Queen Anne" & "Victorian" Residential



Scan for review of a typical Queen Anne



Scan for a recent fire with rescue in Lawrence, Mass.



Things to Know

- Large 2 1/2- 3 stories in height--Many have been made into multi-family units
- Late 1800s to early 1900s era
- Wood Frame Construction/Lath and Plaster
- Asphalt Shingles popular choice
- Balloon Frame/Little fire stopping
- Open Stairwells
- Lots of vertical arteries such as hot/cold air ducts, dumbwaiters, pocket doors etc.
- Steep roofs covered with slate or several layers of asphalt shingles
- Expect a tough, interior fire fight very manpower intensive