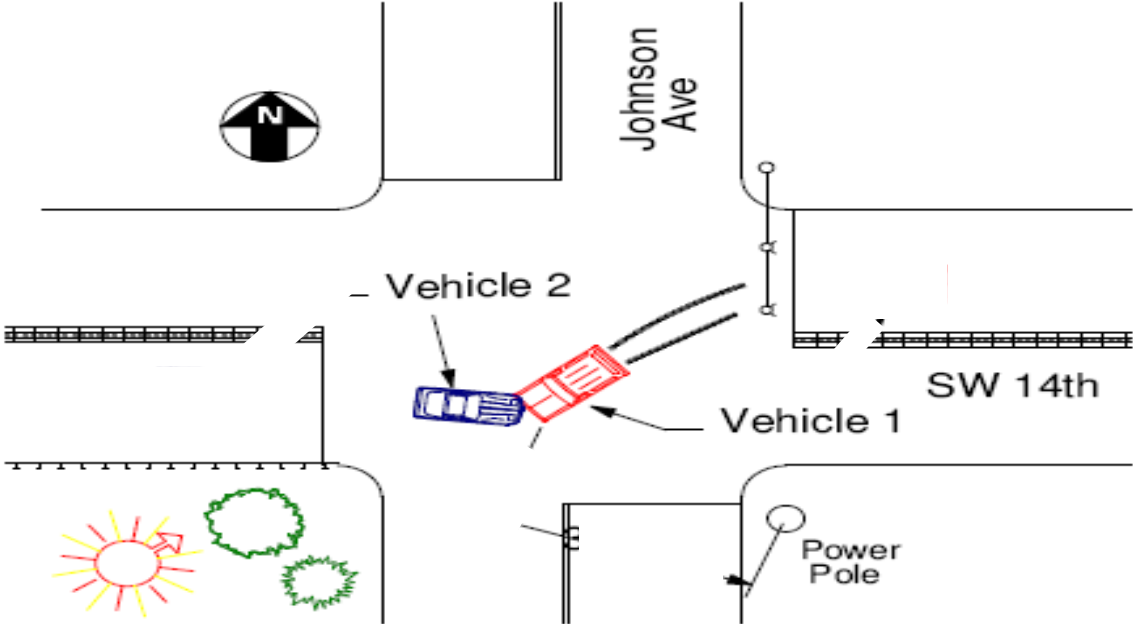


| NFPA Objectives (JPR's) | Job Levels | Critical Safety Points |
|--|--|--|
| <ul style="list-style-type: none"> NFPA 1001 (2008) 5.3.3 | <ul style="list-style-type: none"> All responders | <ul style="list-style-type: none"> PPE and traffic control procedures |

Scenario: You have been dispatched to an accident at 14th & Johnson Ave. You are approaching from the west with an ambulance, engine and battalion chief. The engine will arrive first. Extrication will be needed for the driver of vehicle #2 and an additional ambulance will be needed for vehicle 1 driver. The second ambulance will approach from the east.

| | | |
|--|--|---|
| <p>Locate all responding equipment</p> <p><i>Use similar drawings to ID direction and final location</i></p> <p style="text-align: right;">Amb 1 </p> | <p>Identify where traffic cones would be placed</p> <p><i>Indicate cone locations</i></p> <p style="text-align: center;"></p> | <p>List PPE to be used for this operation</p> <p style="text-align: center;"><i>-EMS crews -Suppression / rescue crews</i></p> |
| <p>What hazards are you watching out for and what are their control methods?</p> | <p>If the incident escalates, where would staging be and how is it controlled?</p> | <p>How are additional resources requested or returned?</p> |
| <p>Describe the IMS positions used here.</p> | <p>What are the primary hazards associated with these incidents?</p> | <p>Explain your interaction with the local PD during this incident.</p> |



| | | |
|--------------------|--------------------------|-----------------------|
| Drill Assigned to: | Local Drill Applications | Date of Drill: |
| SOG #: | Reading Assignment: | Practical Assignment: |