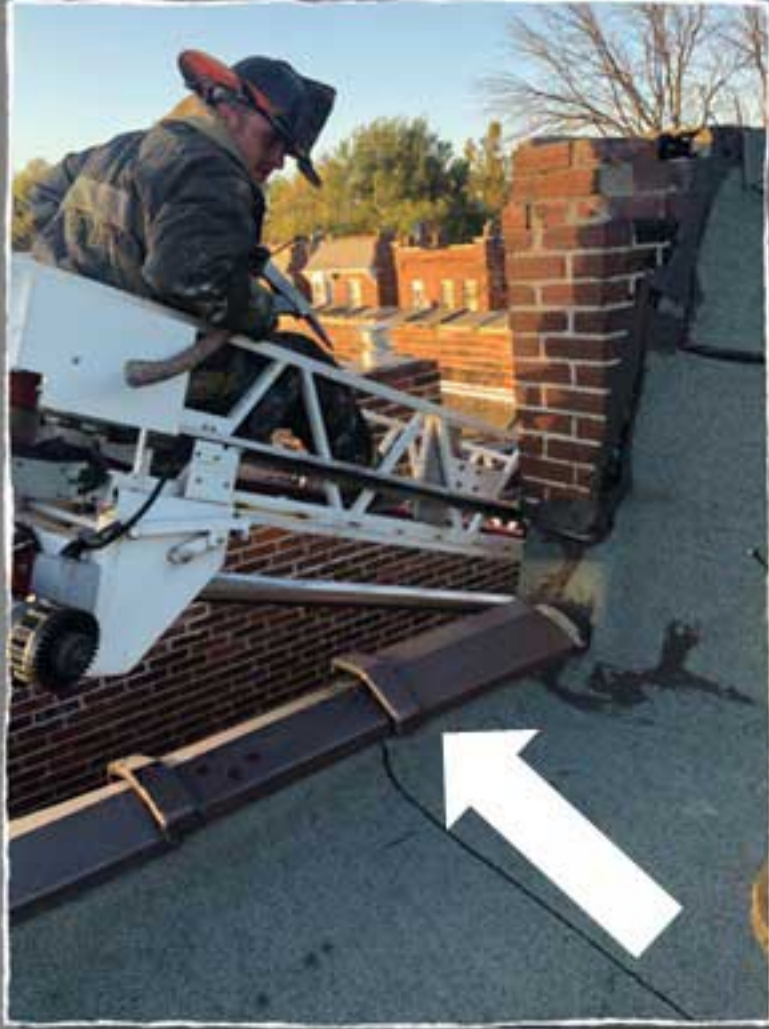


# Main Street Memo Coping Stones



**Buildings with parapet walls will have coping stones placed on top of these walls. These are meant to shed water and snow.**

**The coping stones will be attached to the brick wall with mortar to allow stability and the weight of the stone will hold it in place.**

**Use caution when transferring from a ladder or aerial to the roof. Also, be cautious with aerial buckets near them. Always use a life belt when operating in an aerial bucket. (See FDNY LODD report below.)**

**After many years, they may only be held together by gravity. Master streams may knock them loose.**

Coping Stone Article from  
[Jerseyfirefighters.com](http://Jerseyfirefighters.com)



Scan for William  
Tolley FDNY L-135  
LODD Report



**Fire Engineering**